

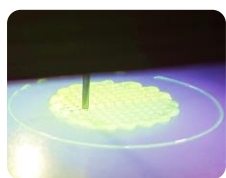
STABLE INX[®]

Stability for long lasting support

X STABLE INX[®] is a synthetic shear thinning, bio-interactive scaffold ink. It allows for easy printing due to its **shear thinning behaviour**.

It is cell interactive and non-biodegradable. Therefore, it can provide long lasting support to the cells. After photo-crosslinking, a very robust hydrogel is obtained.

Key Properties:



Biocompatibility: biocompatible and **cell interactive**

Reproducibility: Production under **strict quality control**

Biostable: suitable for long term applications.

Processability: The shear thinning behaviour allow easy printing at a broad temperature range

Easy handling: Delivered in a **ready-to-use** cartridge. Ready for printing

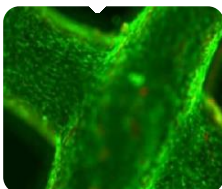
UV-crosslinkable

Mechanical integrity: Very robust hydrogel suitable for stiff tissue engineering applications



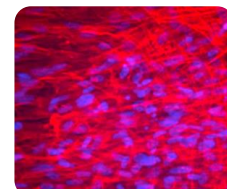
Application potential (under expansion):

Bone Tissue



Osteoblasts

Skin



nHDF