








**X SOLID INX<sup>®</sup>** is a photo-crosslinkable synthetic biodegradable polyester based on our patented **CURASOL<sup>®</sup>** technology. It combines the benefits of conventional stiff polyester materials with low temperature (< 80 °C) processability.

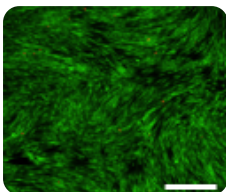
It is biologically inert, but can be coated with the provided coating to allow cells to adhere and proliferate on the scaffold.

### Key Properties:

-  **Biocompatibility:** biocompatible and non-cell interactive
-  **Reproducibility:** Production under **strict quality control**
-  **Biodegradable**
-  **Processability:** Thanks to the CURASOL<sup>®</sup> technology, the material can be processed at low temperature followed by photocrosslinking
-  **Easy handling:** Delivered in a **ready-to-use** cartridge. Ready for printing after heating
-  **UV-crosslinkable** in the solid state thanks to the CURASOL<sup>®</sup> technology
-  **Mechanical integrity:** Very robust polyester suitable for stiff tissue engineering applications

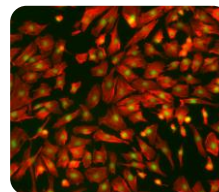
### Application potential (to be expanded):

Skin

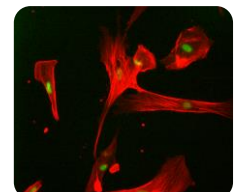


HFF

Blood Vessels



HUVEC



SMC