






GEL-MA INX[®]

The gold standard since 2000

Gelatin-Methacrylamide, first developed in our lab in 2000, has emerged as one of the gold standards in tissue engineering and biofabrication worldwide.

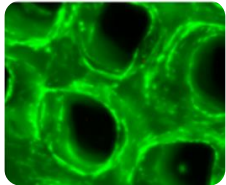
X GEL-MA INX[®] is based on gelatin derived from natural collagen which has been modified with photopolymerizable functional groups which allow crosslinking of hydrogel after printing.

Key Properties:

-  **Biocompatibility:** supports **cell adhesion** and proliferation.
-  **Reproducibility:** Production under **strict quality control**
-  **Biodegradability:** enables **cellular remodelling** of the printed matrix.
-  **Easy handling:** Delivered in a **ready-to-use** cartridge. Ready for printing after heating
-  **UV-crosslinkable**

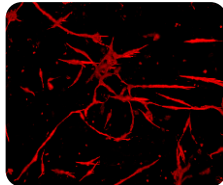
Application potential:

Adipose Tissue



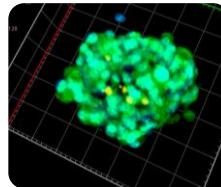
ASC

Blood Vessels



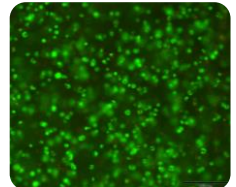
HUVEC

Brain Tissue



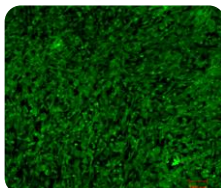
Glioblastoma

Cartilage



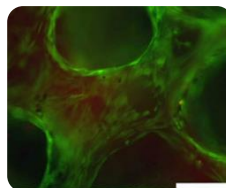
Chondrocytes

Bone Tissue



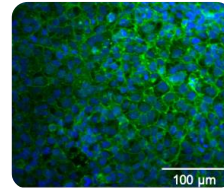
Osteoblasts

Skin



HFF

Cornea



CEnC